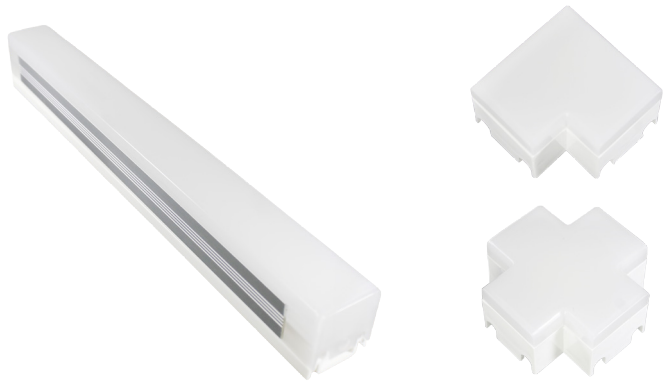


# GS-EZLite - Connect Strip Series

Type: \_\_\_\_\_  
 Project: \_\_\_\_\_  
 Catalog #: \_\_\_\_\_

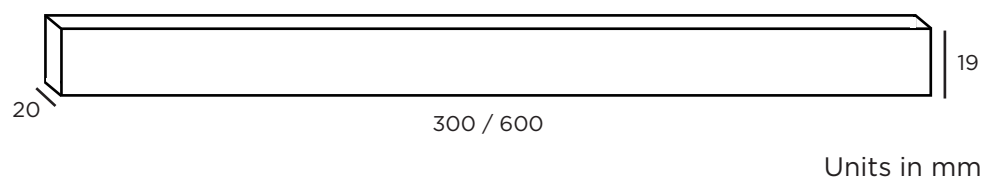


## Main Features

- Flexible installation by power track with magnet
- Extends length without wire and dark area
- 20M without Vf drop
- Dimmable with accessories
- Made of PC + Aluminum

Model	GS-5W-EZLite	GS-9W-EZLite
Lumen Output	380 lm (76 lm/W)	680 lm (76 lm/W)
Power Consumption	5W	9W
CRI	80	80
Colour Temperature (CCT)	3000K, 4000K, 6000K, Red, Green, Blue	3000K, 4000K, 6000K, Red, Green, Blue
Input Voltage	24V DC	24V DC
Dimensions	300 x 20 x 19 mm	600 x 20 x 19 mm
IP	20	20
Certification	cETLus	cETLus
Warranty	5 Years	5 Years

## Technical Information

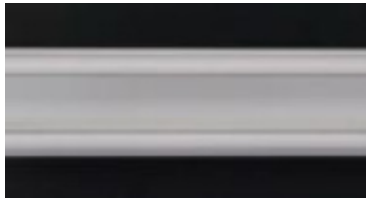


## Order Form

Model	Wattage	Series	Colour Temperature
<input type="checkbox"/> GS	<input type="checkbox"/> 5W	<input type="checkbox"/> EZLite	<input type="checkbox"/> 3000K
	<input type="checkbox"/> 9W		<input type="checkbox"/> 4000K
			<input type="checkbox"/> 6000K
			<input type="checkbox"/> Red
			<input type="checkbox"/> Green
			<input type="checkbox"/> Blue

### Power Track

GS-EZ-1T - 1 ft power track  
GS-EZ-2T - 2 ft power track



### L-Connector

GS-EZ-LC - L connector



### Power Connector

GS-EZ-PWR - connect power track



### Cross Connector

GS-EZ-XC - cross connector



### Extension Connector

GS-EZ-CTR12 - 12" extension connector

